

# Set Design

Standards

**Anchor Standard 1:** Generate and conceptualize artistic ideas and work.

**Cr1.a.** Conceptualize a unified piece of theatre

b. Create a complete design for a drama/ theatre work that incorporates multiple elements of technology.



Goodman





Goodman





**Goodman**





Goodman





Goodman



# The Curious Incident of the Dog in the Night-Time





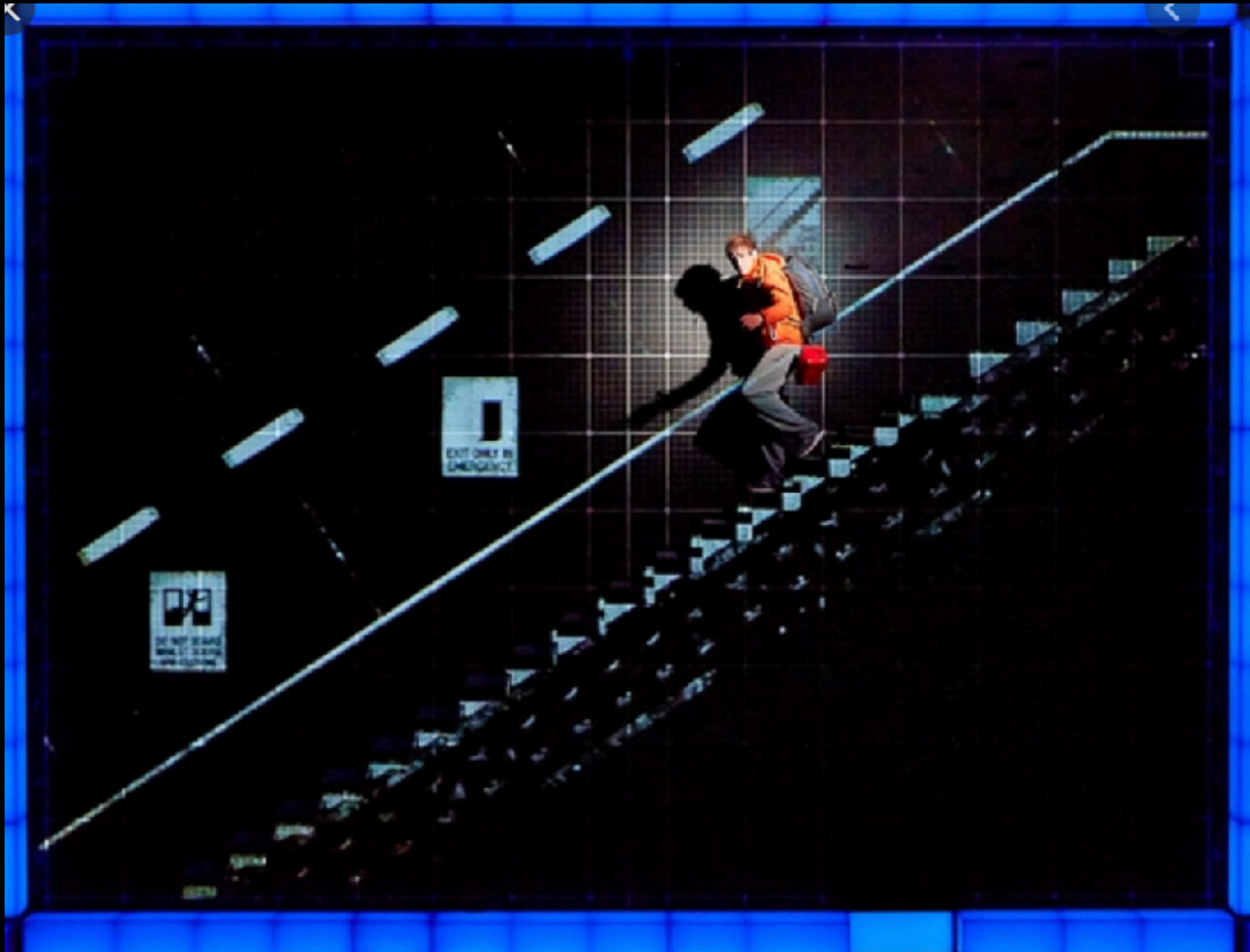
# The Curious Incident of the Dog in the Night-Time





# The Curious Incident of the Dog in the Night-Time





**The Curious Incident of the Dog in the Night-Time**





**Box set**





**Box Set**





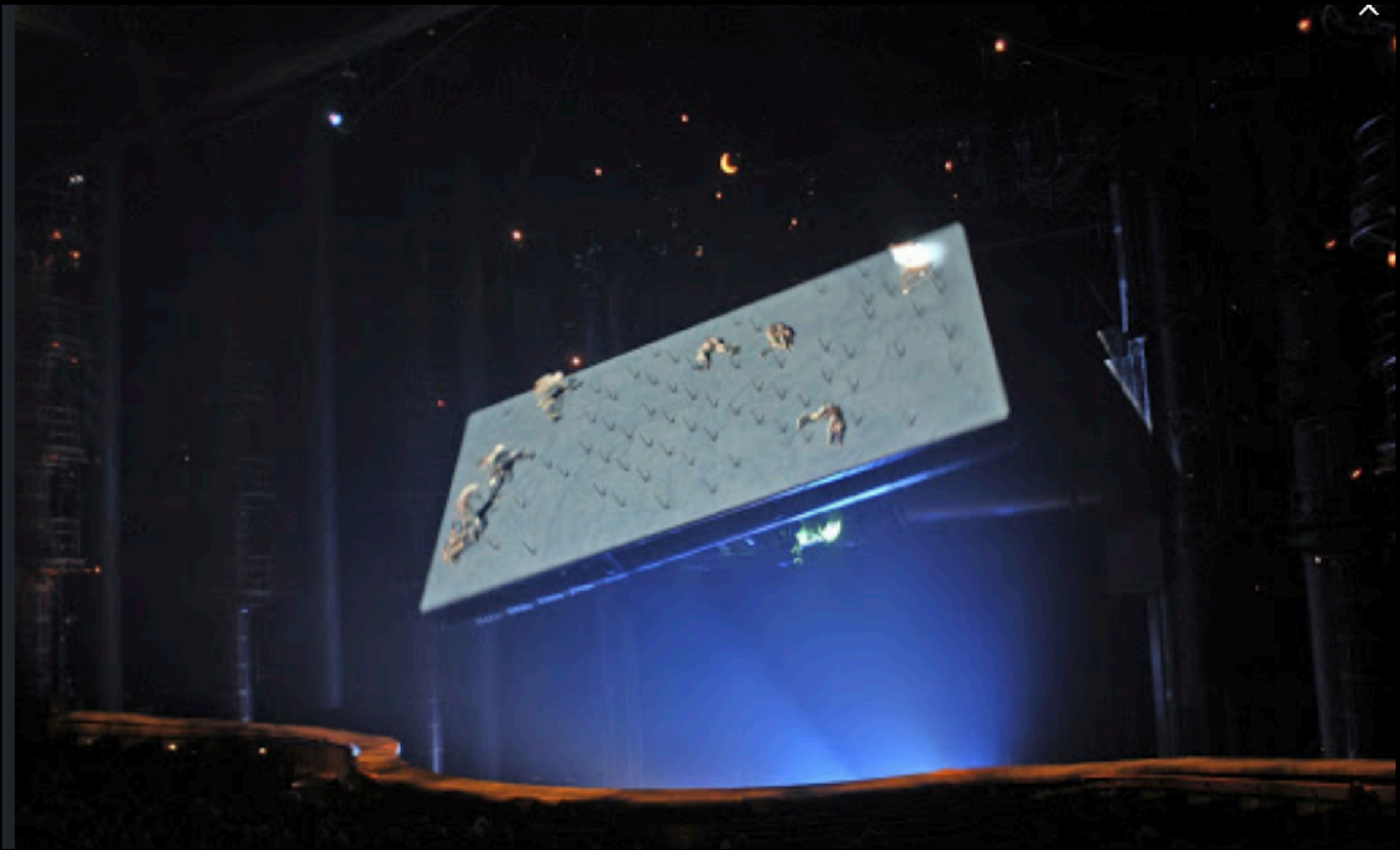
KA





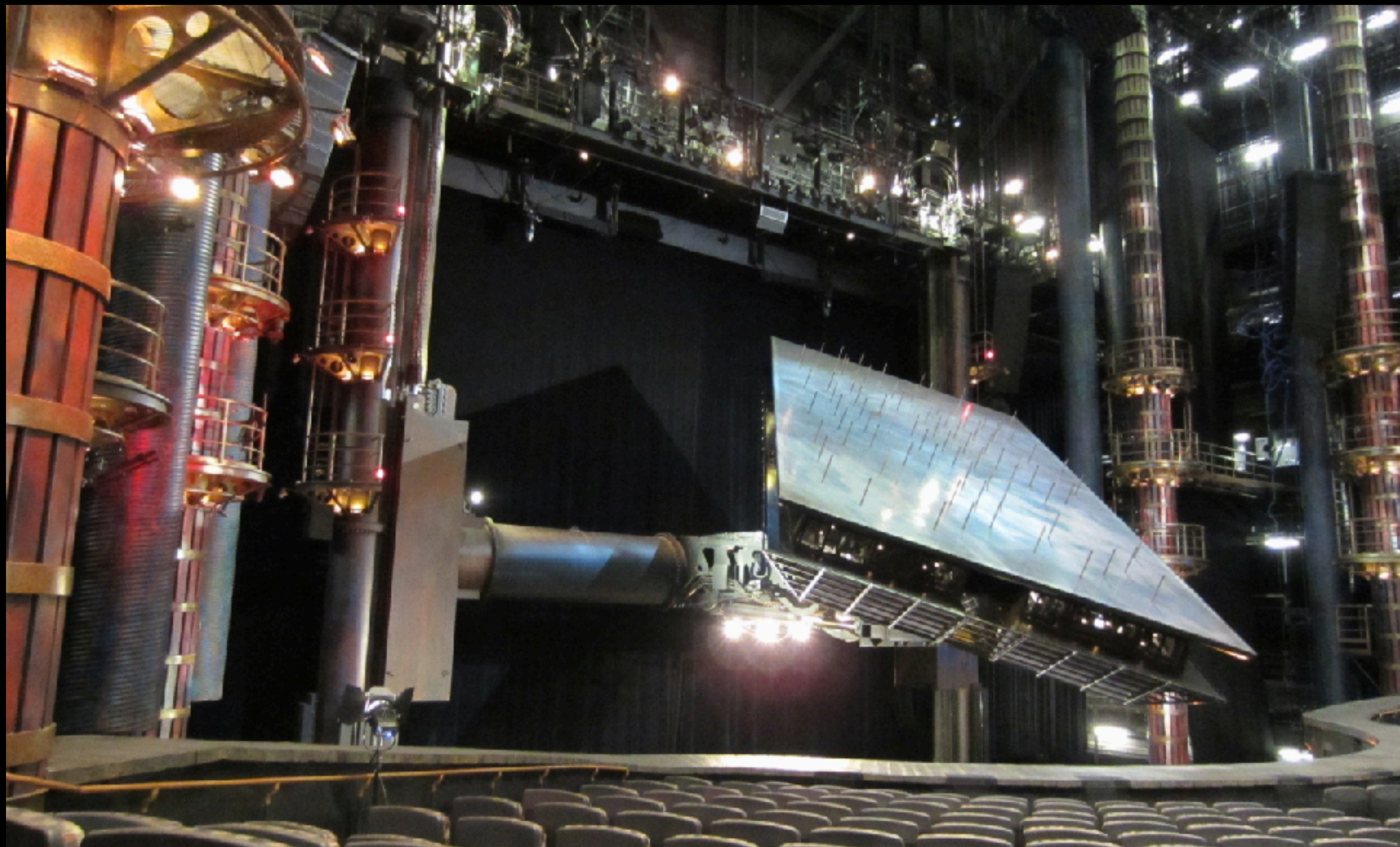
KA





**KA - The Battle Wall**





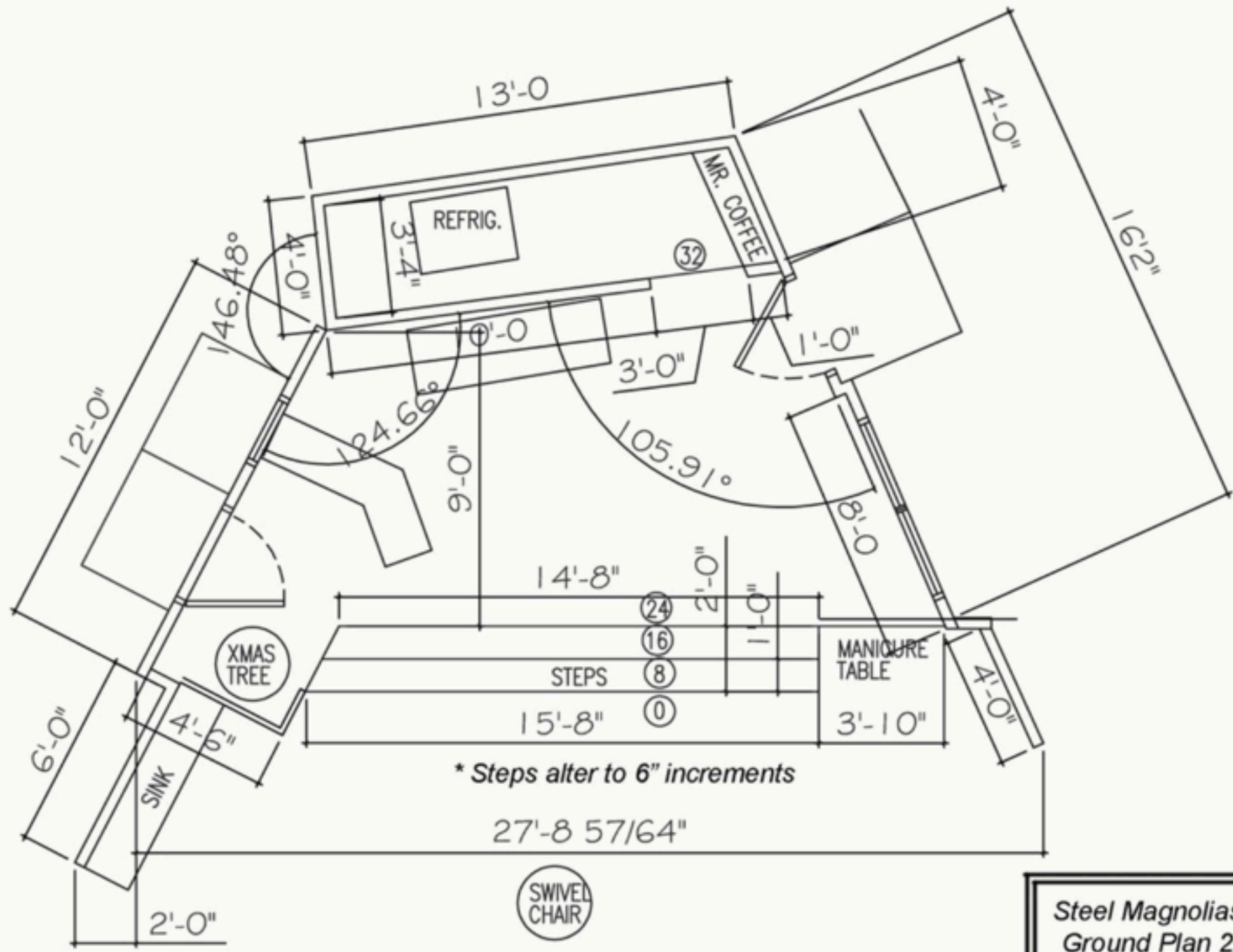
KA

# Ka Battle Wall

Battle Wall Documentary Clip

Battle Wall Clip

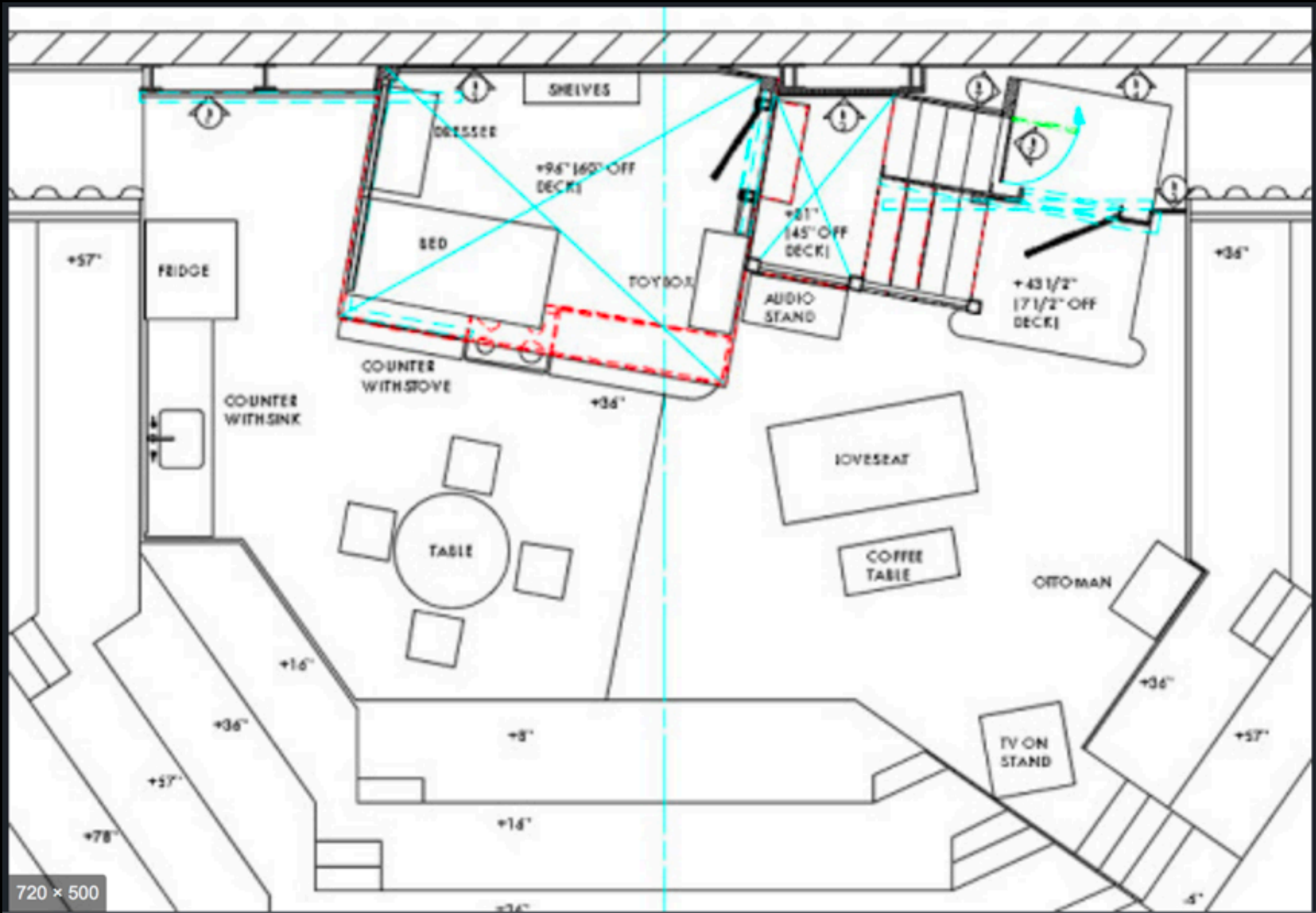




\* Steps alter to 6" increments

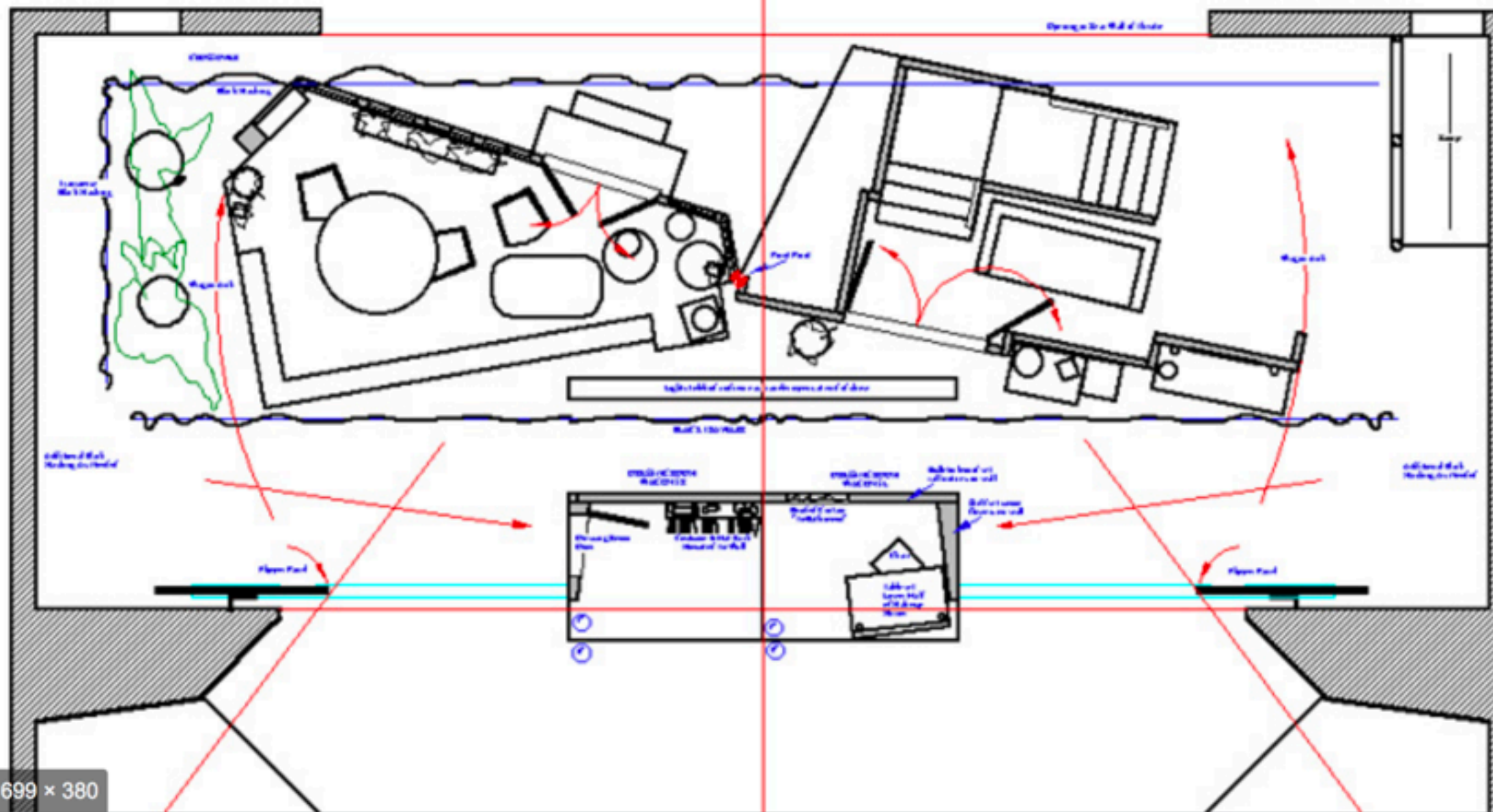
Steel Magnolias  
Ground Plan 2  
Dimensions





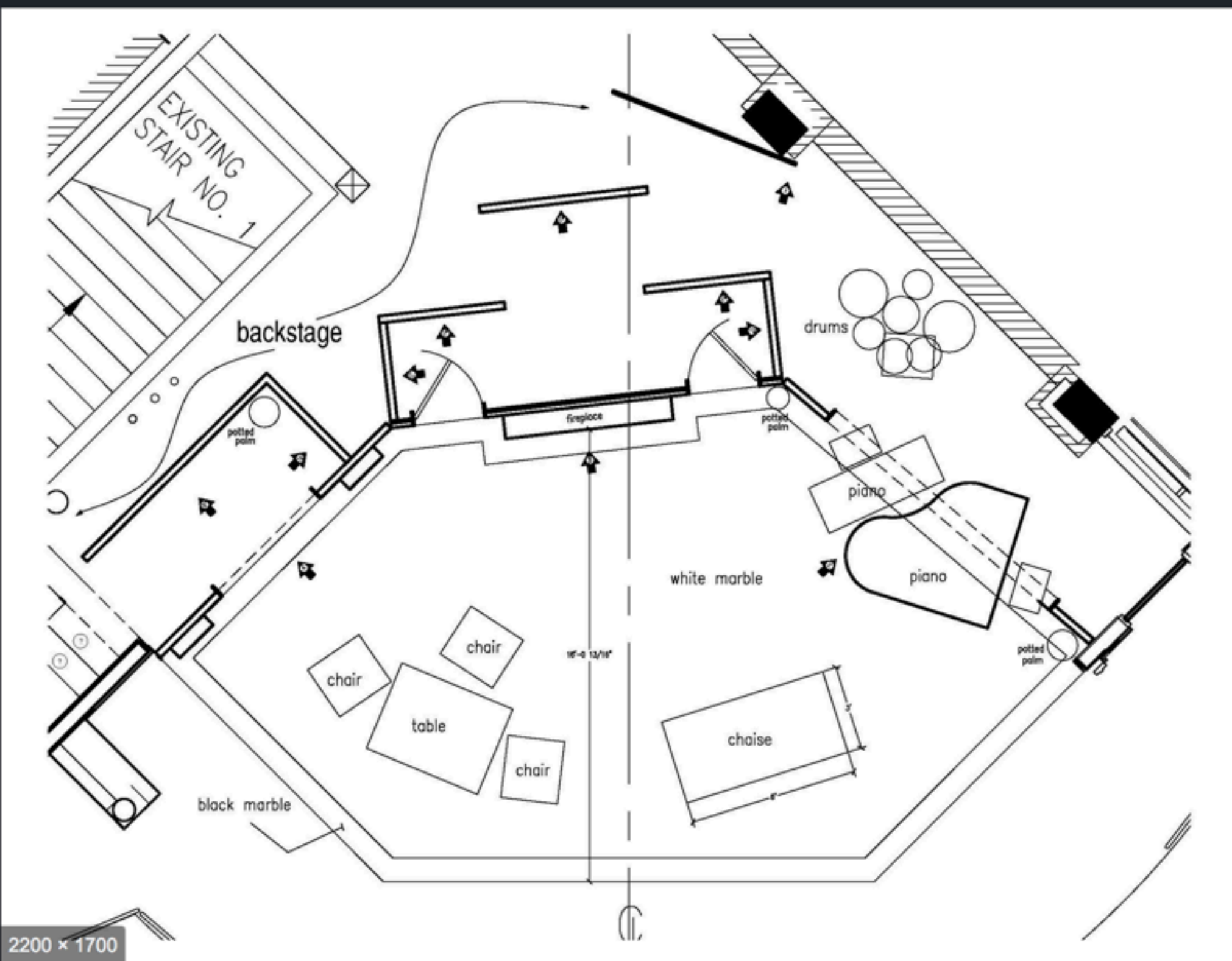
720 x 500





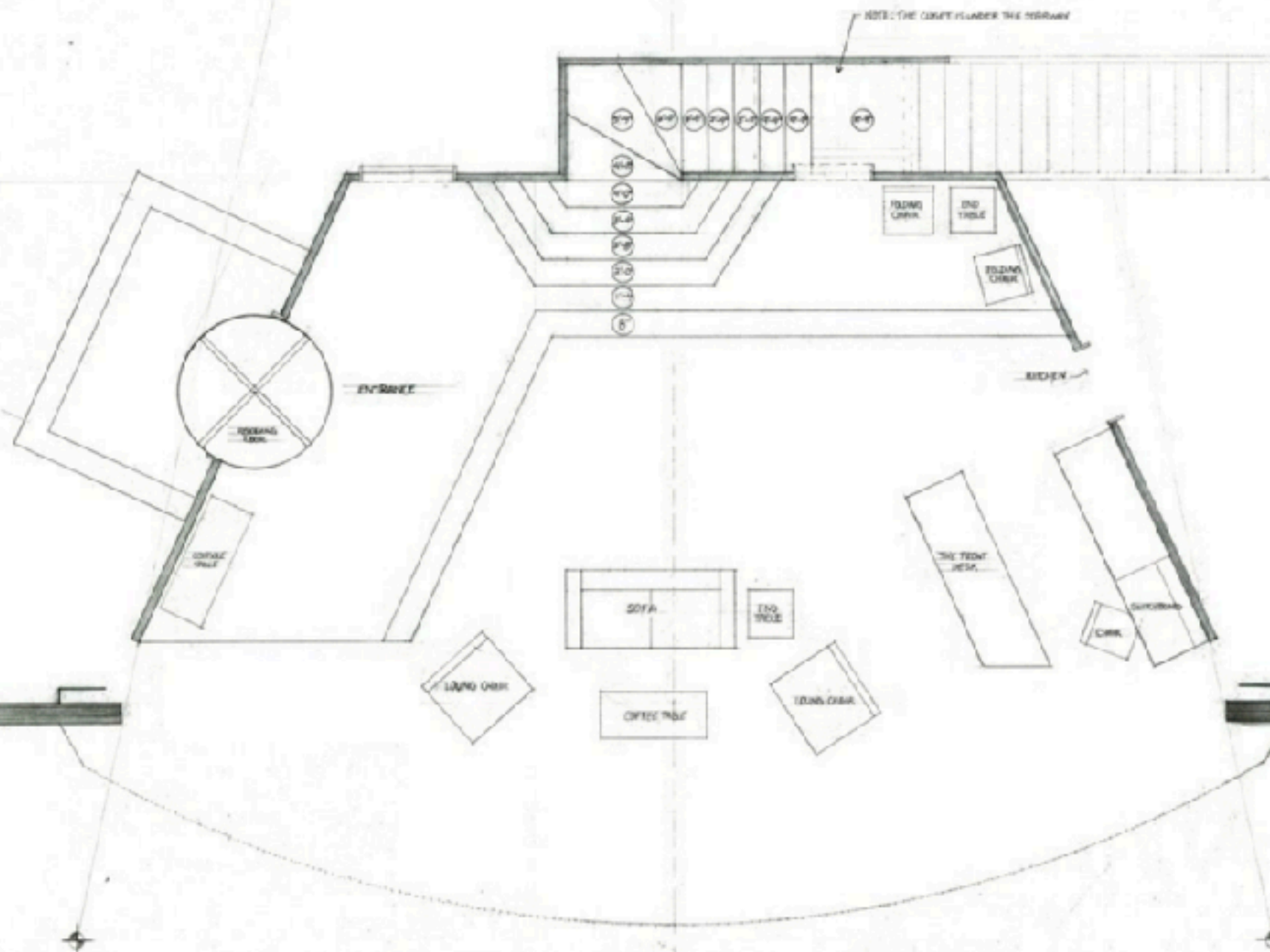
699 x 380







- ① — CYCLOPANA
- ② —
- ③ — LX 4
- ④ — TRANSSEX
- ⑤ — BORDER 5
- ⑥ —
- ⑦ — LEGS 5
- ⑧ — BORDER 4
- ⑨ —
- ⑩ — LX 3
- ⑪ —
- ⑫ —
- ⑬ — LEGS 4
- ⑭ — BORDER 3
- ⑮ —
- ⑯ — LX 2
- ⑰ — LEGS 3
- ⑱ — BORDER 2
- ⑲ —
- ⑳ — SURM
- ㉑ — LEGS 2
- ㉒ —
- ㉓ — LX 1
- ㉔ — LEGS 1
- ㉕ — BORDER 1
- ㉖ — MAIN CURTAIN



HOT L BALTIMORE	
CASGRAIN THEATRE	
DESIGNER: VANESSA TOWN	DIRECTOR:
COORDINATOR: GREGORY PEAR	DRAWING:
SCALE: 1/4" = 1'-0"	DATE:





**Set Design**  
**Basic drafting**





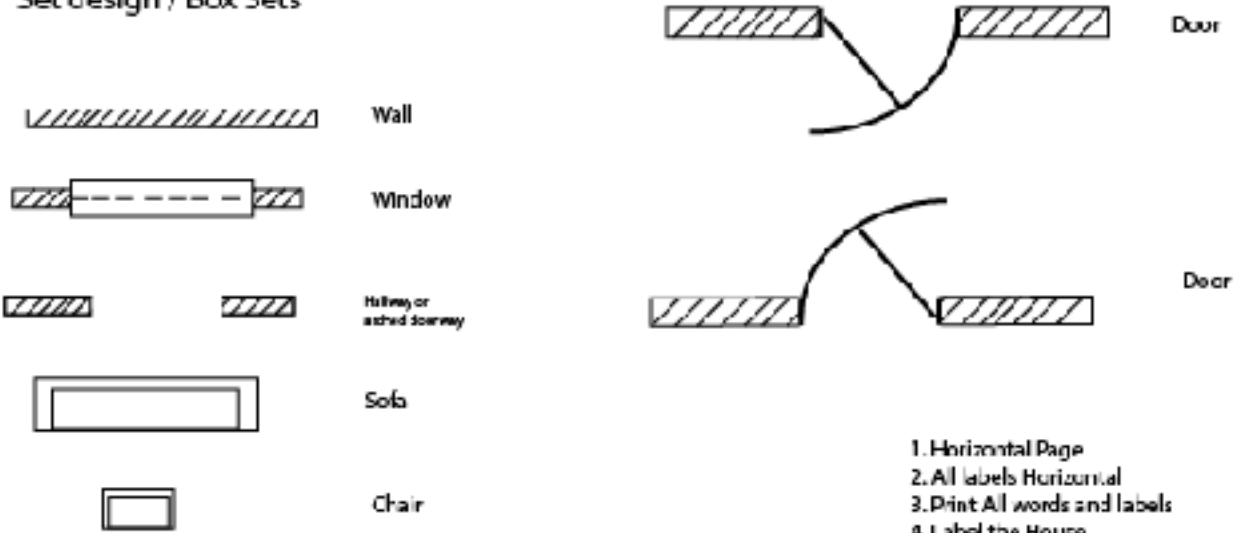




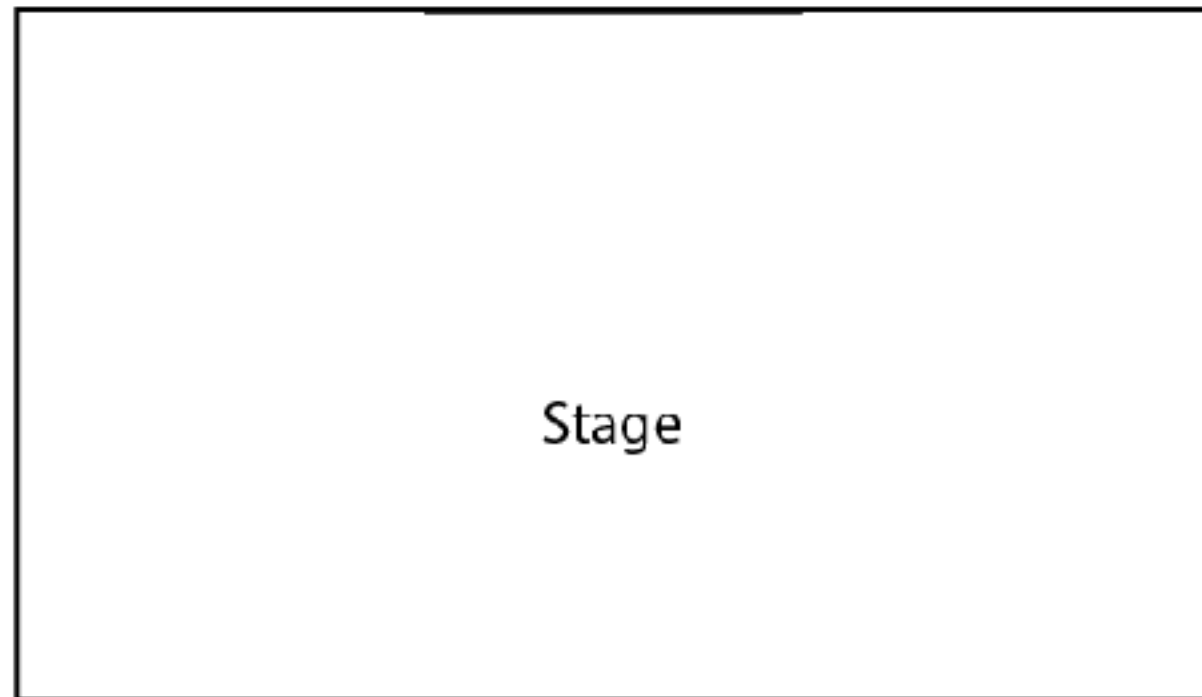


# Box Sets

## Set design / Box Sets



1. Horizontal Page
2. All labels Horizontal
3. Print All words and labels
4. Label the House
5. Draw stage area as shown
6. Must have
  - a) 3 playing areas
  - b) 3 entrances / exits
  - c) furniture
  - d) stage logic



Who
What
Where
When

House

Name
Class #



## Requirements

1. Horizontal Page
2. All labels Horizontal
3. Print All words and labels
4. Label the House
5. Draw stage area as shown
6. Must have
  - a) 3 playing areas
  - b) 3 entrances / exits
  - c) furniture
  - d) stage logic